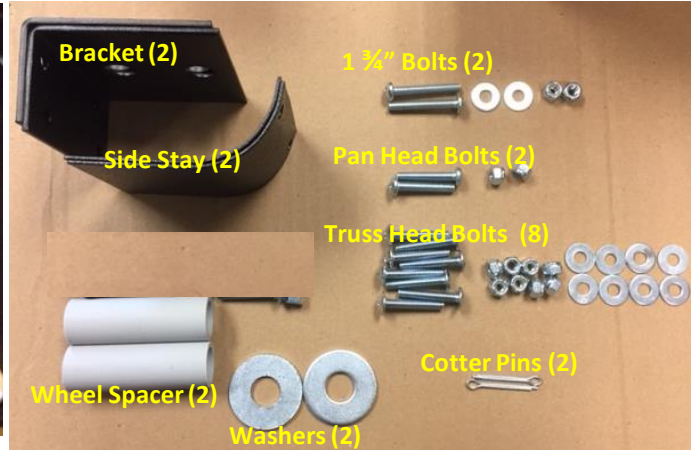
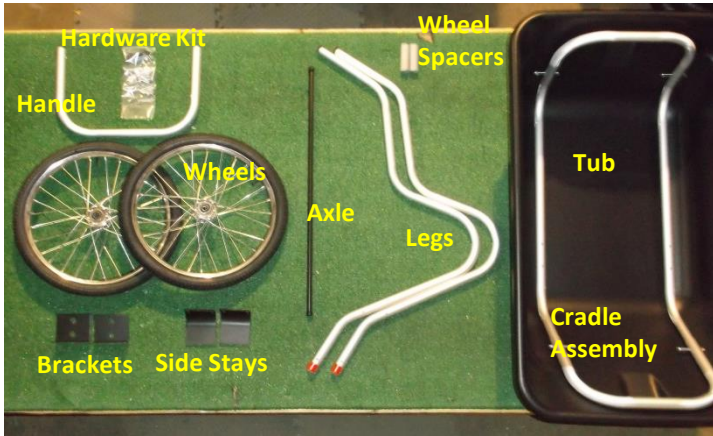


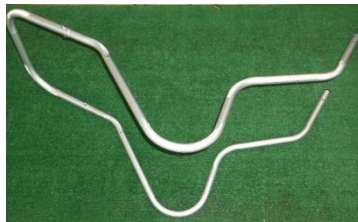
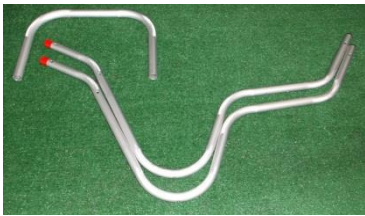
# Residential Smart Cart Instructions

**Step 1:** Open the boxes and locate the different components. Get the right tools.



**Tools:** Phillips head screw driver. Socket or wrench set (7/16). Pliers to bend the cotter pins

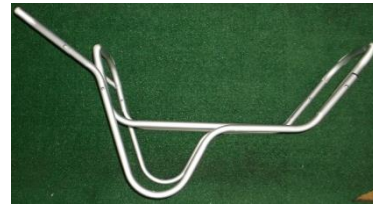
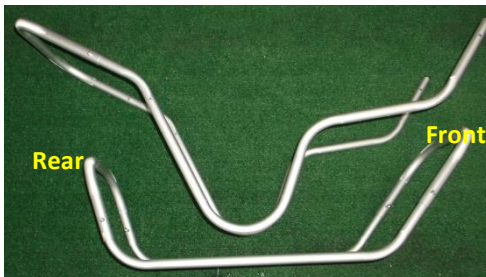
**Step 2:** Create the Leg Assembly by attaching the Handle to the Legs using the Pan Head bolts.



-Remove and dispose of the red caps. The handle slides on the legs where the red caps were.

**Do not fully tighten the hardware.**

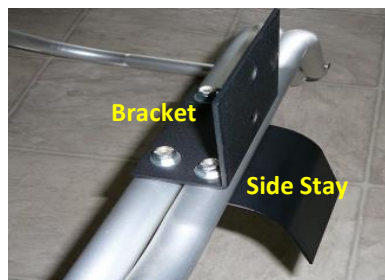
**Step 3:** Connect the Leg Assembly to the Cradle Assembly using the 2.5" Bolts already attached to the Cradle Assembly.



Connect the front section of the cradle first and then the rear section.

**Do not fully tighten the hardware.**

**Step 4:** Turn the frame upside down and connect the Brackets and the Side Stays to the Frame using the truss head bolts, nuts and washers.



There is 1 Left Hand Side Bracket and 1 Right Hand Side Bracket. The 4 holes will align perfectly when you have the right bracket for the right side.

**TIGHTEN ALL THE HARDWARE. Be careful not to overtighten and do not flatten the tube structure as this might create failure at a later date.**

## Residential Smart Cart Instructions

### Step 5: Install the Wheel Spacers and Washers, Mount the Wheels to the Axle and Secure Using the Cotter Pins.



Install the axle through the bracket by first removing one of the vinyl caps, then sliding the axle through the appropriate hole for your wheel size (picture is showing the 20" Spoke Wheel location and the farthest hole from the aluminum frame is for the 16" wheels). Slide the plastic spacers on the axle then slide the washers on the axle. Finish by sliding the wheels on the axle. **It is important that the washers are installed between the wheels and the plastic spacers.**



The cotter pins needs to be opened and bent in order to stay secured.

### Step 6: Install the Tub to the Frame



When everything is tight and the wheels are secured, insert the tub starting from the handle end and slide it forward along the frame, be sure it is centered. When the front end reaches its stop point, push the back end under the rear frame piece to secure the tub. You may need to apply very firm pressure and you might hear a loud "snap". This is fine. **To remove the tub**, place your knee on the kickout while holding the handle with both hands and give a 'yank'.

**Optional: Secure the tub to the frame** If having the possibility of removing the tub without using tools is not important to you and you want to make sure that the tub will never disengage from the frame follow the instructions below. Please note that in most applications the cart will work perfectly without having to secure the tub to the frame using bolts. **The cart is designed in a way that you do not have to secure the tub using bolts. In some very specific applications it may be required and this is why we provided the instructions below. We recommend that you start using your cart without performing this step and decide if you really need it.**



8.2: Secure the tub to the aluminum frame using the 1 3/4" bolts, nuts and washers. Make that the washers are installed inside the tub in direct contact with the plastic as pictured.

[If you have difficulty putting together your new cart, please call 207.591.4250 for assistance before disassembling the cart \(as shipped\).](tel:207.591.4250)

**NOTE: The Residential Smart Cart is not made for human transport.**